



Quick Links

print this page

- PAWS FOR A CAUSE WALK
- How to Help the Animals
- Shelters & Adoptable Animals ▶
- Animal Care & Advocacy ▶
- News and Publications ▶
- Kids
- Farm Animal Welfare
- Wildlife Welfare
- Cruelty Investigations ▶
- Volunteering ▶
- About the BC SPCA ▶
- Employment Opportunities
- Search
- Home

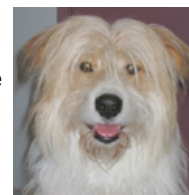
# Animal Care & Education

## What's Having a Pet Going to Cost?

[Dogs](#) | [Cats](#) | [Rabbits](#) | [Guinea Pigs](#) | [Hamster/Rat/Gerbil](#)

### DOGS:

To keep a medium sized, mixed breed, **spayed female dog** the yearly cost will be approximately the following:



Food	12 bags dog food (18kg) @ \$45	\$540.00
Biscuit treats	2 boxes per month @ \$3.99	96.00
Veterinary Care	Yearly Visit - exam and vaccinations	120.00
Nail clipping	6 trips to the vet @ \$15.00	90.00
License fee		30.00
Grooming	Spring bath and brush out	40.00
Vacation	2 weeks dog care @ \$20/day	280.00

**Total**  
*\*please note that is not the Adoption cost at an SPCA shelter, this is an approximate yearly cost of keeping the animal* **\$1196.00**

### One Time Costs:

Adoption fee ( <i>*approx. only, check with <a href="#">your local Branch</a> for current adoption prices</i> )	at the SPCA	\$145.00- \$395.00
Spaying (female) and tattoo ( <i>all dogs adopted from the SPCA are already spayed/neutered &amp; tattooed</i> ) <i>*Approx. only, check with your local Veterinarian for actual prices</i>		120.00- 250.00
Food and water dishes		15.00
Collar and leash		25.00
Brush and comb		15.00
Toys - balls, Frisbees, etc.		25.00
Crate		65.00

- o [Animal Care](#)
- o [Animal Behaviour](#)
- o [Animal Issues](#)
- o [Adoption Information](#)
- o [Kids](#)
- o [Teachers](#)
- o [The Violence Link](#)
- o [Sheltering Resources](#)

[Click here to visit the BC SPCA's YouTube Channel!](#)  
  
[www.youtube.com/bcspcabc](http://www.youtube.com/bcspcabc)



- o [5 Steps to a Successful Adoption](#)

- [Pre-adoption Checklist](#)
- [Making the Right Match](#)
- [Available Shelter Animals Online](#)
- [Fostering Option](#)
- [Cost Estimates for Various Pets](#)
- [Recommended Support Books and Links](#)

00.00

**Total**

**\$290.00-  
\$520.00**

The above does not include emergency medical care, initial vaccinations, obedience classes, the cost of fencing, or bed.

< [back to top](#) >

**CATS**

To keep a spayed female, domestic long haired **cat**, the yearly costs will be approximately the following:



Food and Treats	4 cans of cat food per month @ \$2.00	\$96.00
Dry cat food	1 bag (3.6kg) per month @ \$20.00	240.00
Cat treats	12 bags @ \$2.00	24.00
Veterinary Care	Yearly visit - exam and vaccinations	80.00
Kitty litter	1 bag of cat litter per month @ \$12.00	144.00
Nail clipping	6 @ \$15.00	90.00
Anti-furball medication	2 tubes @ \$7.50	15.00
Cat care	Vacation 2 weeks @ \$15.00 per day	210.00

**Total**

***\*please note that is not the Adoption cost at an SPCA shelter, this is an approximate yearly cost of keeping the animal***

**\$899.00**

**One time costs:**

Adoption fee (*approx. only, check with <a href="#">your local Branch</a> for current adoption prices)	at the SPCA	\$90.00- \$175.00
Spaying (female) and tattoo (all cats adopted from the SPCA are already spayed/neutered & tattooed) *Approx. only, check with your local Veterinarian for actual prices		120.00
Food and water dishes		9.00
Collar, leash and harness		18.00
Brush and comb		15.00

Litter pan and scoop	10.00
Small scratching post	30.00
Cardboard traveling box	15.00
Toys and miscellaneous	20.00
<b>Total</b>	<b>\$207.00- \$292.00</b>

The above does not include emergency medical care, initial vaccinations, the cost of an outdoor cat run or bed.

< [back to top](#) >

## RABBITS

To keep a domestic **rabbit** the yearly cost will be approximately the following:



11kg bag of pellets	every 2mo. @ \$9.00	\$54.00
Fresh veggies and fruit	every mo. @ \$15.00	180.00
Hay (Timothy)	12 bales @ \$5.00 each	60.00
White wood shavings	5 bales @ \$10.00 each	50.00
Annual veterinarian checkup		45.00
Nail trim	every 2 months @ \$10.00	60.00
<b>Total</b>		<b>\$449.00</b>
<i><b>*please note that is not the Adoption cost at an SPCA shelter, this is an approximate yearly cost of keeping the animal</b></i>		

### One-time Costs:

Adoption fee (*approx. only, check with <a href="#">your local Branch</a> for current adoption prices)	at the SPCA	\$65.00
Habitat/Hutch		100.00
Spay/Neuter (neuter is less)		75.00
Litter box		12.00
Rabbit care book		15.00

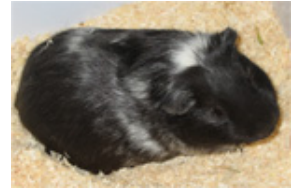
Dishes, water bottle	20.00
Misc. Brush, harness, leash	40.00
<b>Total</b>	<b>\$312.00</b>

These are average costs. It may cost more if you need to pay for someone to care for your rabbit if you go on vacation, you build a large hutch or your rabbit needs special medical attention.

< [back to top](#) >

## GUINEA PIGS

To keep a domestic **guinea pig** the yearly cost will be approximately the following:



Bag of pellets	every 3mo. @ \$30.00	\$90.00
Fresh veggies and fruit	every mo. @\$15.00	180.00
Hay (Timothy)	12 bales @ \$5.00 each	60.00
White wood shavings	5 bales @ \$10.00 each	50.00
Annual veterinarian check-up	once a year	40.00
<b>Total</b>		<b>\$420.00</b>
<i>*please note that is not the Adoption cost at an SPCA shelter, this is an approximate yearly cost of keeping the animal.</i>		

### One-time Costs:

Adoption fee (*approx. only, check with <a href="#">your local Branch</a> for current adoption prices)	at the SPCA	\$15.00
Cage		75.00
Guinea Pig Care Book		15.00
Dishes, water bottle		20.00
Misc. Brush, harness, leash		40.00
<b>Total</b>		<b>\$165.00</b>

These are average costs. It may cost more if you need to pay for someone to care for your guinea pig, if you go on vacation, you build a large hutch or your guinea pig needs special medical attention.

< [back to top](#) >

**HAMSTER / RAT / GERBIL**

To keep a domestic **hamster/rat/gerbil** the yearly cost will be approximately the following:

Bag of pellets	every 2mo. @ \$10.00	\$60.00
Fresh veggies and fruit	every mo. @ \$5.00	60.00
Hay (Timothy)	2 bales @ \$5.00 each	10.00
White wood shavings	5 bales @ \$10.00 each	50.00
Annual veterinarian checkup		45.00
<b>Total</b>		<b>\$225.00</b>
<i>*please note that is not the Adoption cost at an SPCA shelter, this is an approximate yearly cost of keeping the animal</i>		

**One-time Costs:**

Adoption fee (*approx. only, check with <a href="#">your local Branch</a> for current adoption prices)	at the SPCA	\$8.00
Cage		50.00
Care book		15.00
Dishes, water bottle		20.00
Misc. Brush, harness, leash		40.00
<b>Total</b>		<b>\$133.00</b>

These are average costs. It may cost more if you need to pay for someone to care for your hamster/rat/gerbil if you go on vacation, or your hamster/rat/gerbil needs special medical attention.

< [back to top](#) >



Print this page

tell a friend 😊

Anim@ls E-Bulletins ✉



SHARE



British Columbia Society for the Prevention of Cruelty to Animals - BC, Canada

Search:

Fetch!

Charitable Tax # BN 11881 9036 RR0001